

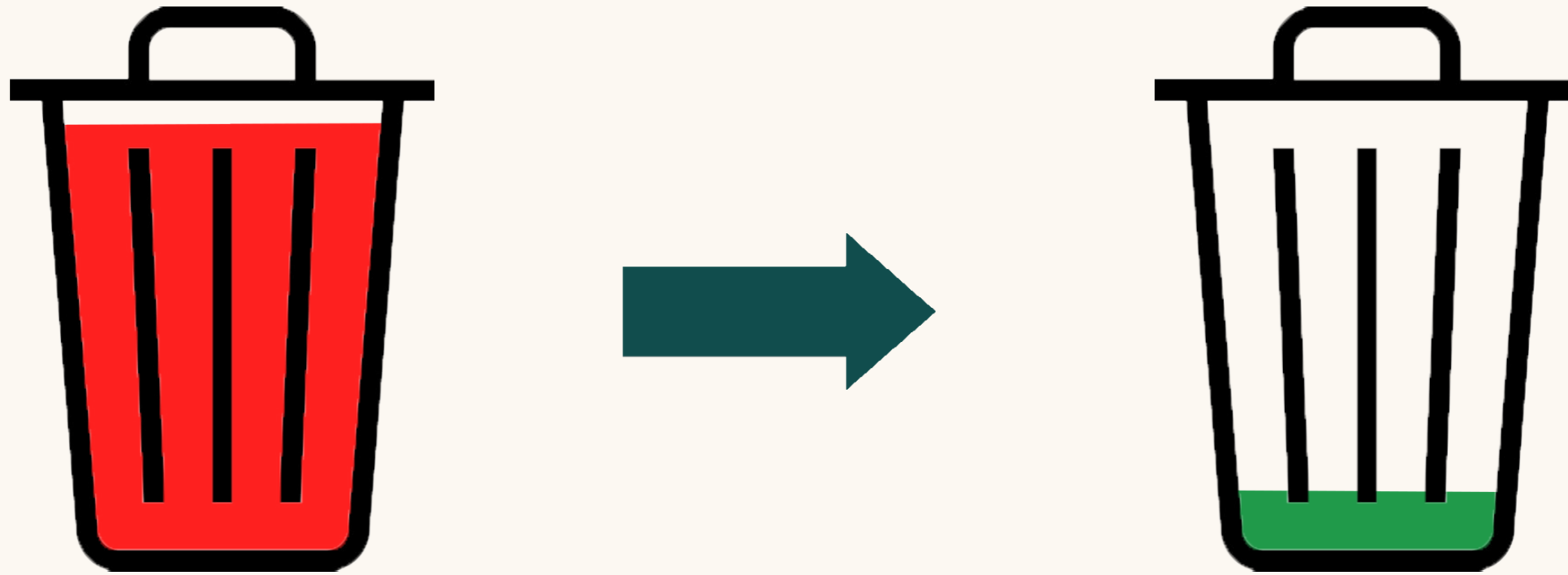
TIERS LIEU ANTI GASPI



Synthèse programme

- . Atelier de revalorisation des déchets**
- . Rassemblement de groupe de maraîchers**
- . Atelier cuisine**
- . Echanges de bonnes pratiques**
- . Espace ressources**
- . Dépôt et retrait libre service**

ANTI GASPI





**1/3 DE LA
NOURRITURE
PRODUITE EST
GASPILLÉE !**

ANTI GASPI

ANTI GASPI

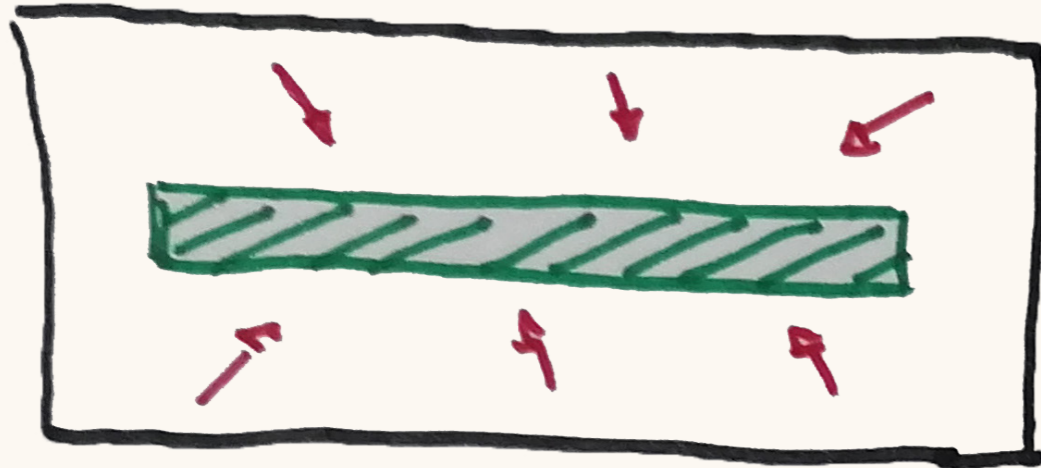


FOND

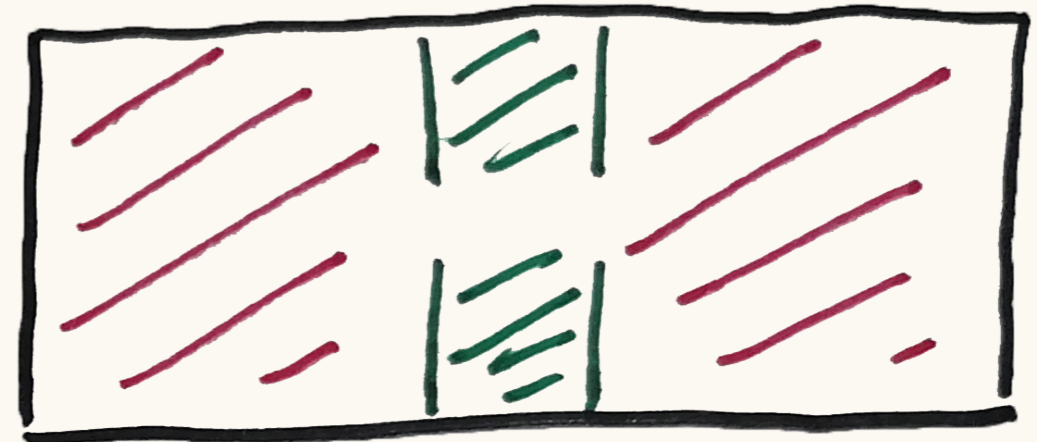
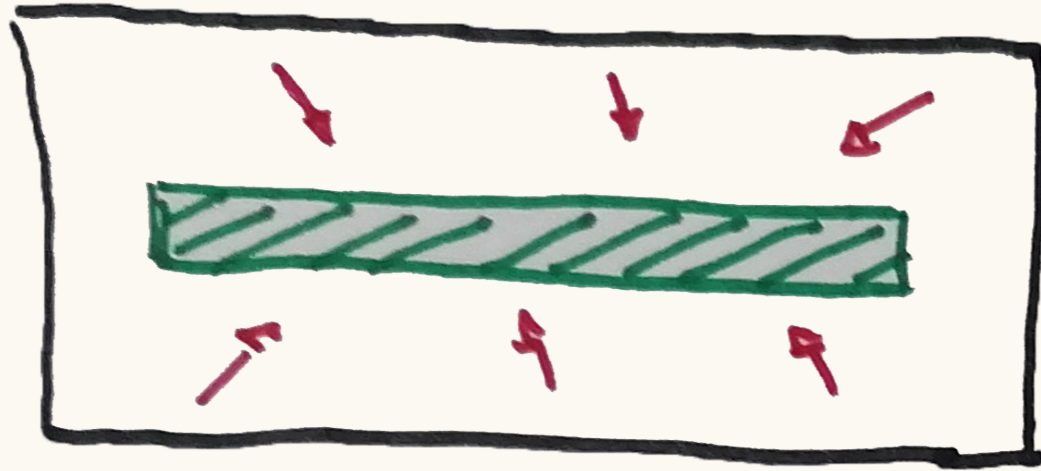
FORME

**Optimiser l'espace en
centralisant les équipements
dans un unique volume**

ANTI GASPI



ANTI GASPI

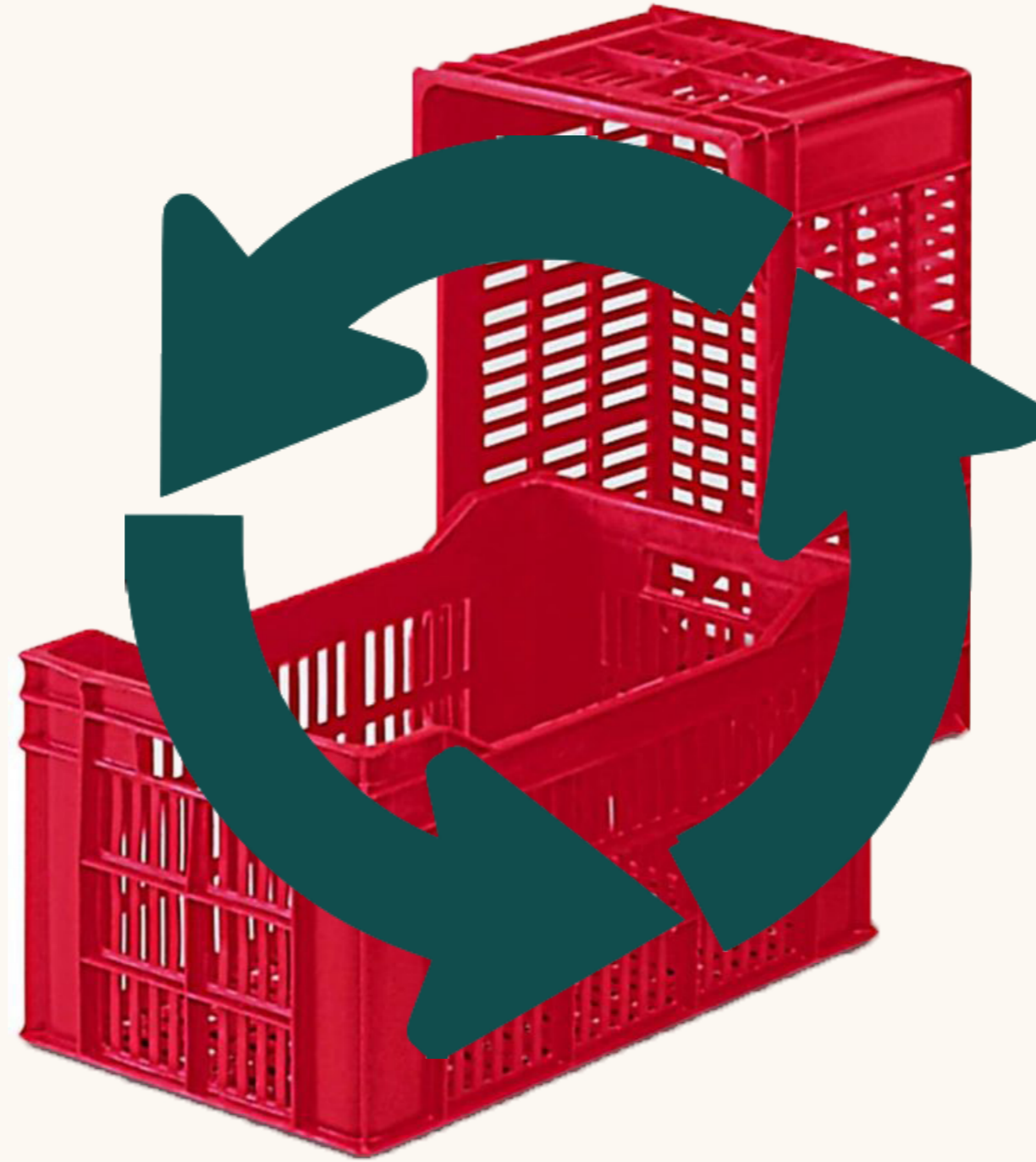


**Structurer l'espace en revalorisant
les ressources sur place :
Les caisses de récoltes**

ANTI GASPI



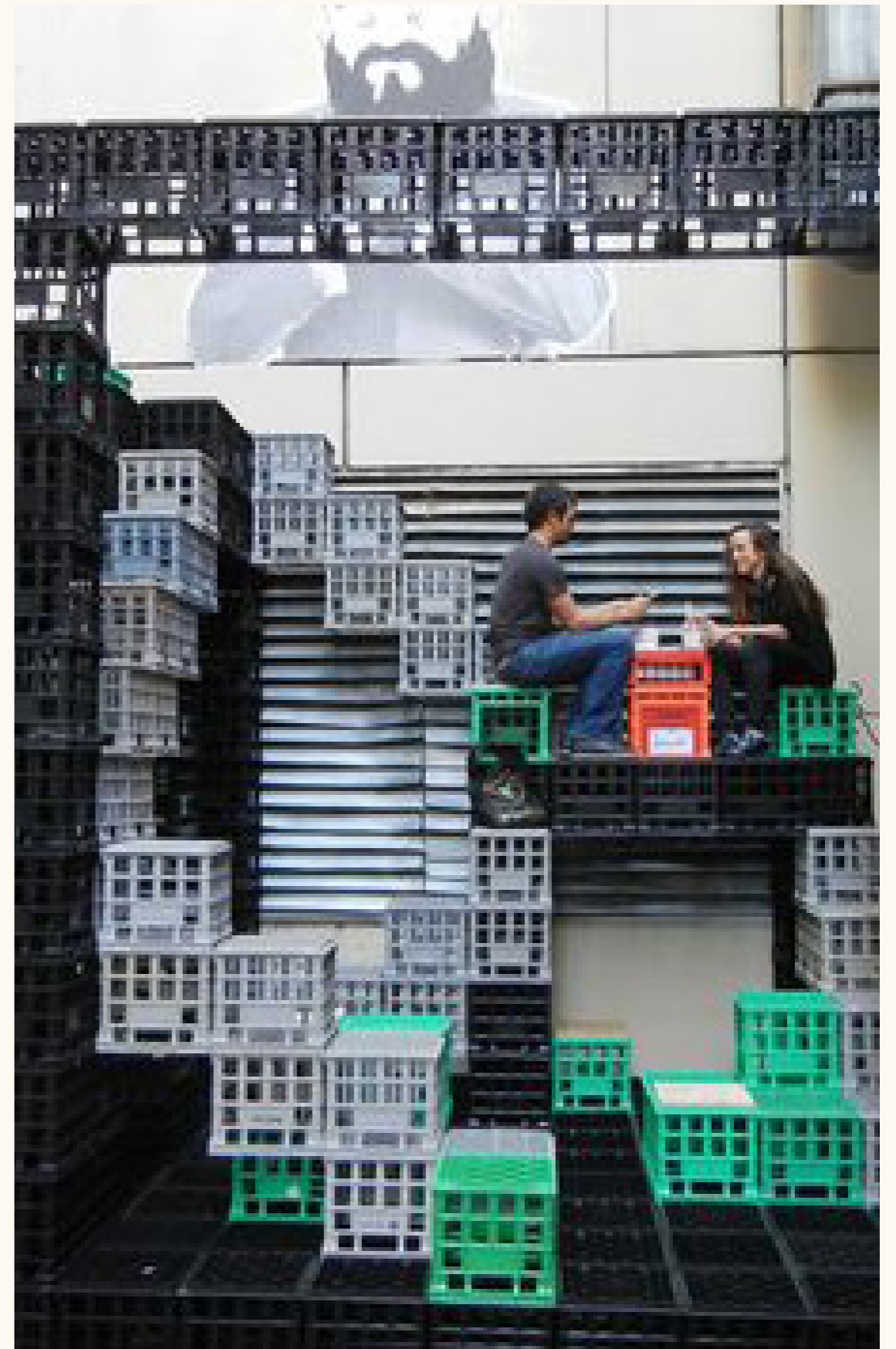
ANTI GASPI



ANTI GASPI



ANTI GASPI



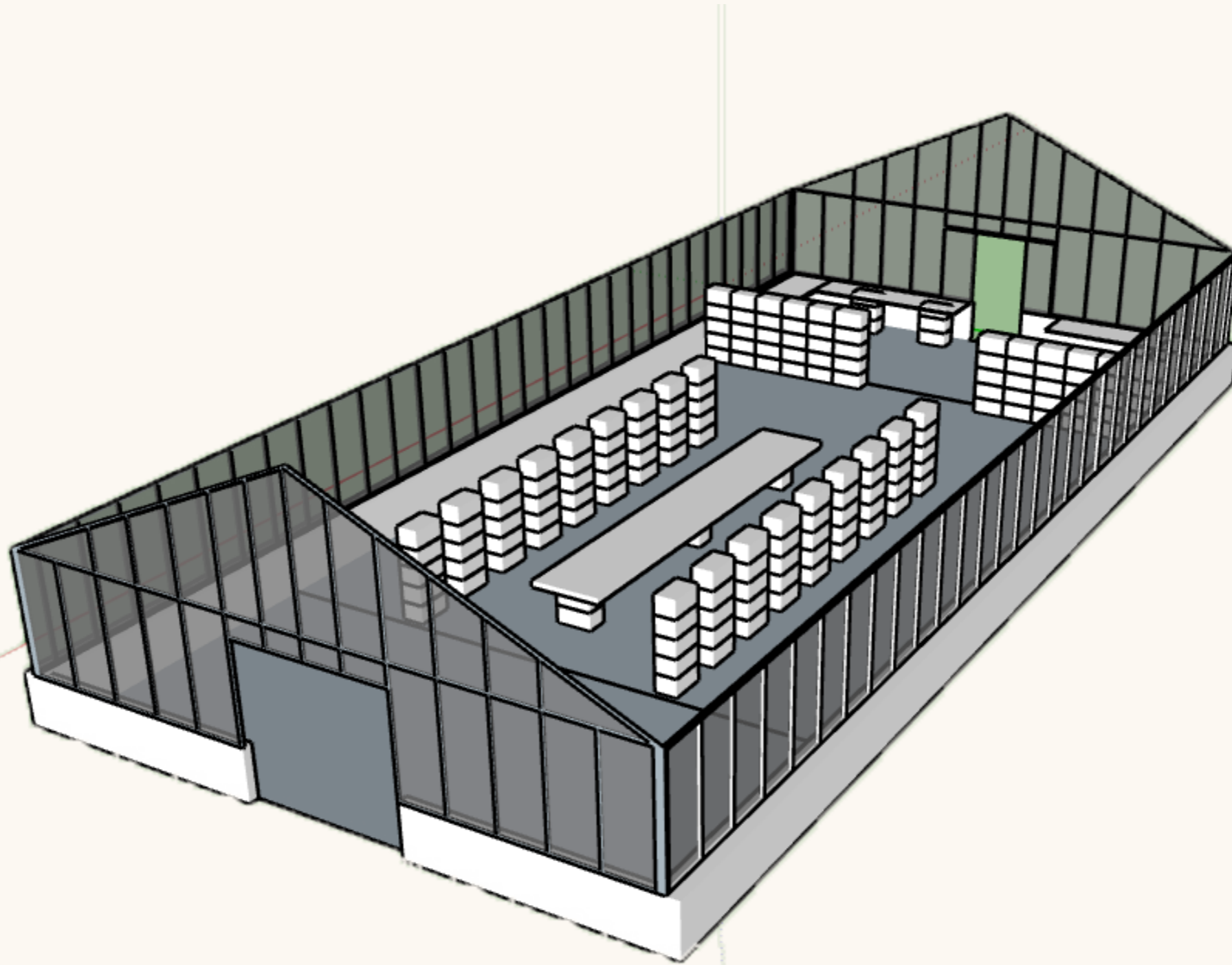
ANTI GASPI



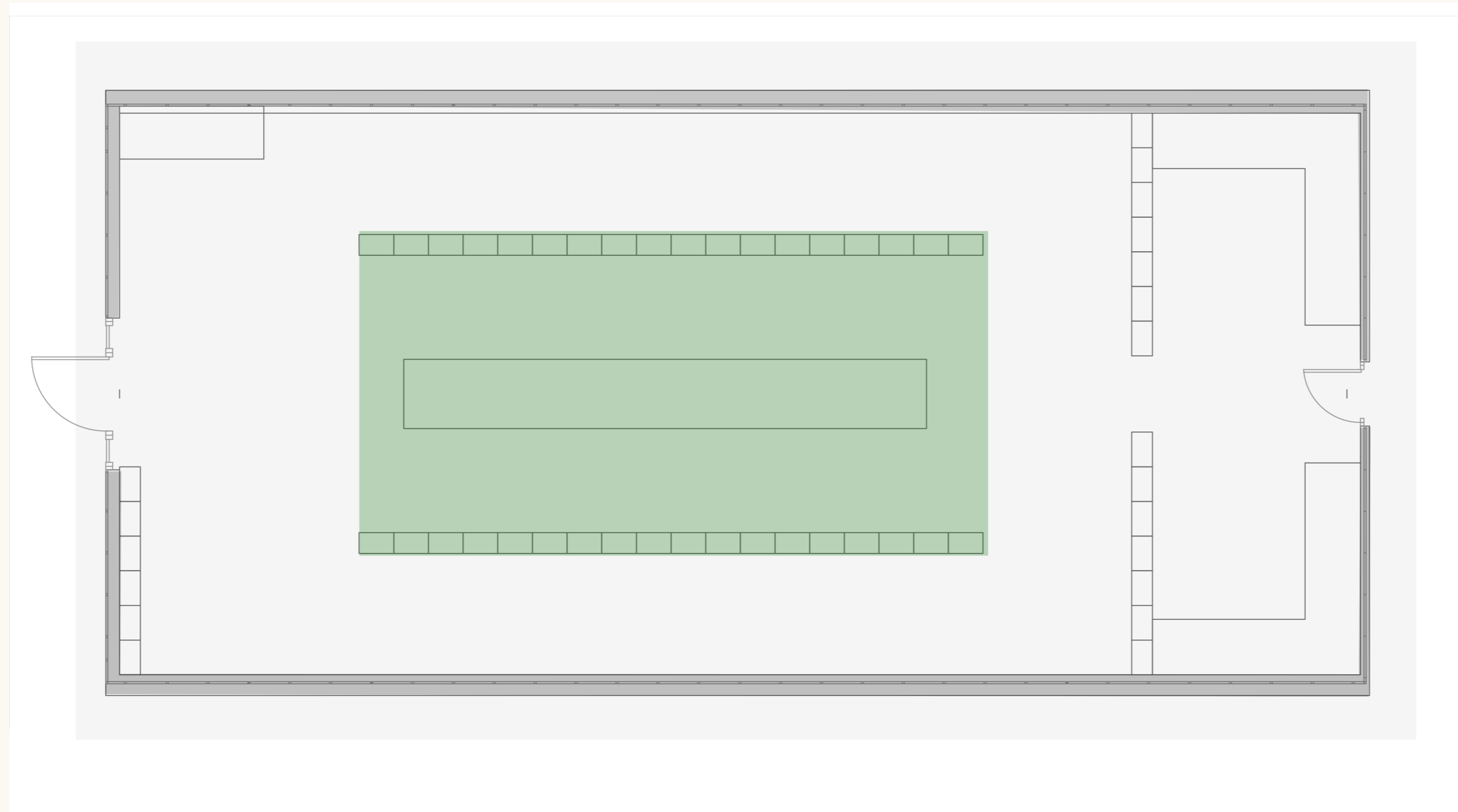
ANTI GASPI



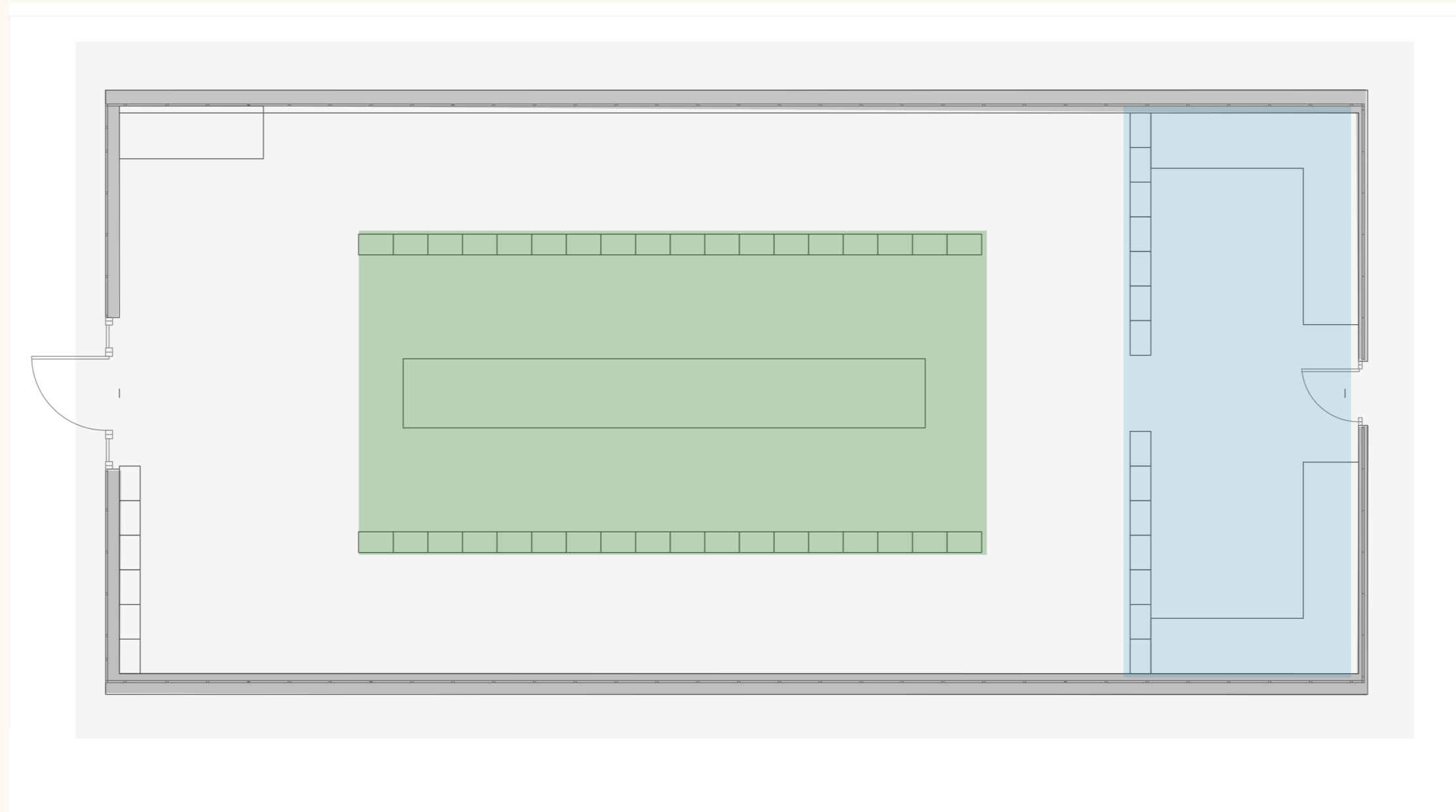
ANTI GASPI



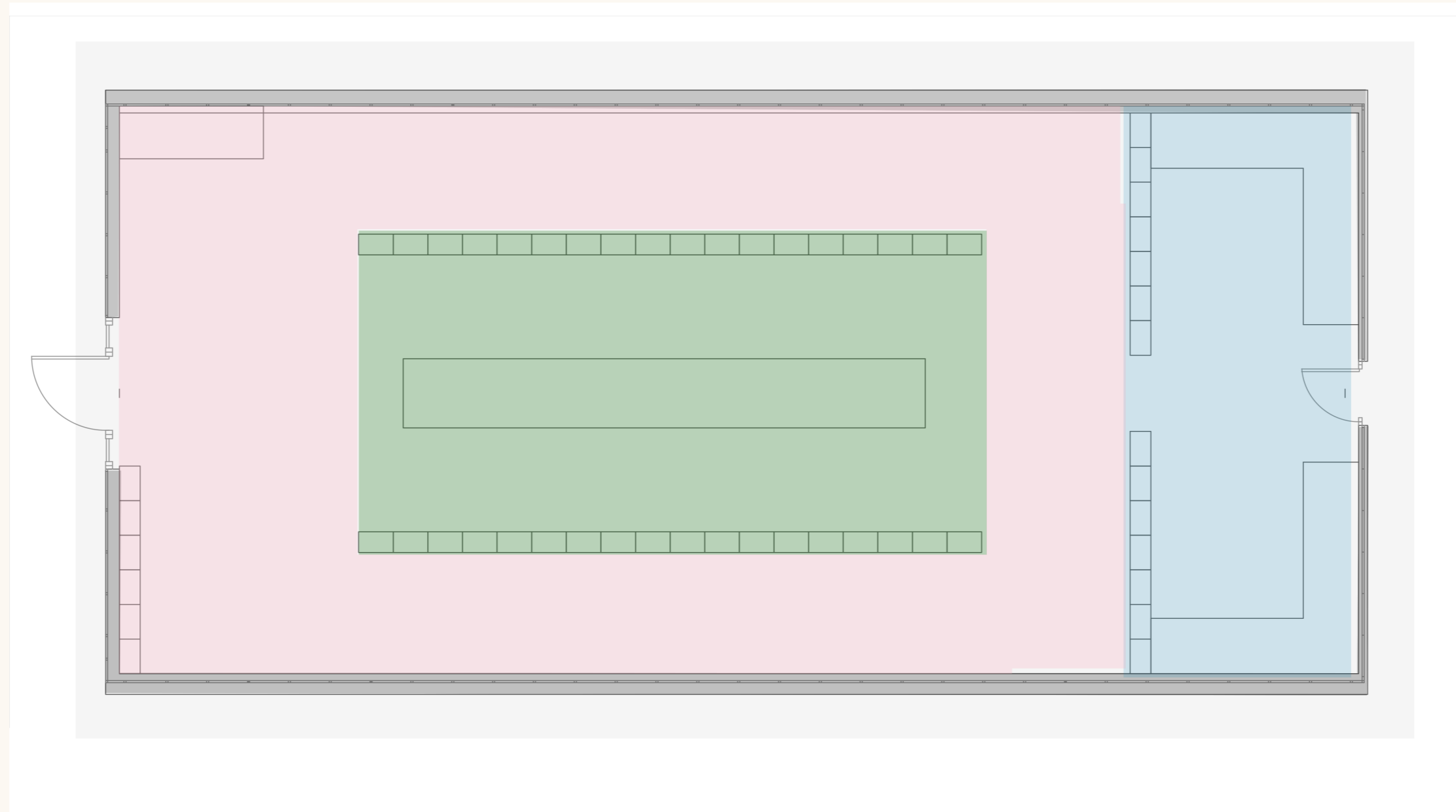
ANTI GASPI



ANTI GASPI



ANTI GASPI



ANTI GASPI



